



SANAKO Study 700

The affordable digital language laboratory

This entry level language lab is designed to help teachers provide the appropriate level of support and encouragement for basic level language activities.

Students benefit from essential language learning functionalities such as listening exercises, and pair and group discussion, while teachers are provided with the tools to support and monitor this student activity.

Study 700 can help schools expand their range of language learning programs by providing an introductory level solution for younger learners or beginners. It's also suitable for schools looking to install their first language learning solution or provide an easy-to-use facility for adult learners.

Schools that invest in this affordable entry-level language learning solution have the option of adding SANAKO Study modules to introduce additional teaching, learning or classroom management activities. Such modules include the ability to stream live video sources to student PCs.

Study 700 can also be upgraded to Study 1200, an advanced language learning solution that provides a full professional suite of recording and collaborative tools. The solution is easy to install and maintain, and like all SANAKO Study solutions, it is built for compatibility with current and future versions of the Microsoft® .NET technology.

Upgradable Language



Supporting Learners

Study 700 allows teachers to use their digital learning resources to help manage student activity in a stimulating interactive environment. The software makes it easy for teachers to launch applications and assignments for students, upload session files for guided learning activities, monitor student screens for support and collaboration, and even focus use of the Internet for managed web-based learning activities.

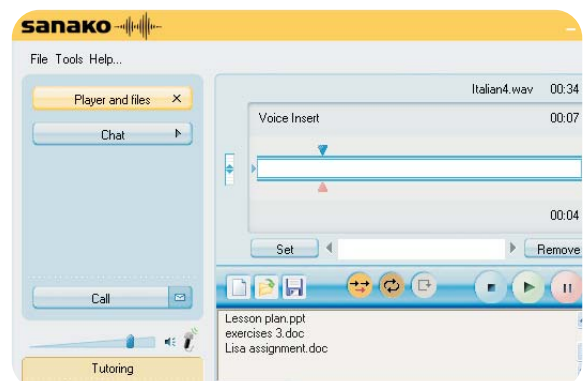
Communication resources such as live two-way audio and text messaging also make it easy for teachers to provide individual support for students in need. They can also be used to create another layer of interactive language-based activities.

Using SANAKO Study 700 teachers can:

- Support and monitor students
- Launch applications and assignments
- Use guided web tours and focus Internet browsing
- Manage student PCs by locking for attention, shutdown, restart, log off and wake-on-lan
- Session files for guided learning material
- Use the Voting feature for live student feedback

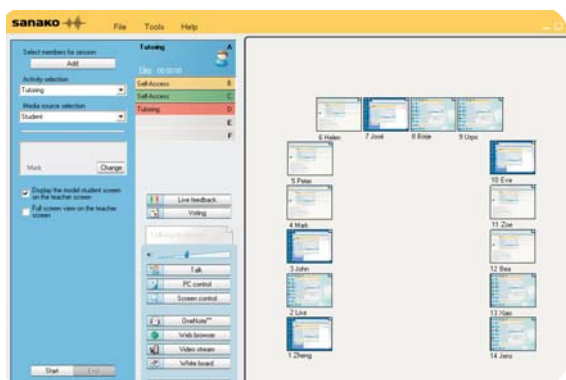
Learning by Doing

The Study 700 discussion activity allows students to develop their speaking and comprehension abilities by engaging in pair and group discussion. The Study 700 student application provides learners with an easy-to-use two-track multimedia recorder. With it, students can engage in introductory level language learning activities such as voice recording, voice insert and recap to improve their speaking skills in the target language. Typical exercises include listen and repeat, question and answer and simultaneous translation. Bookmarks can also be used to help students engage in their listening and speaking activities.

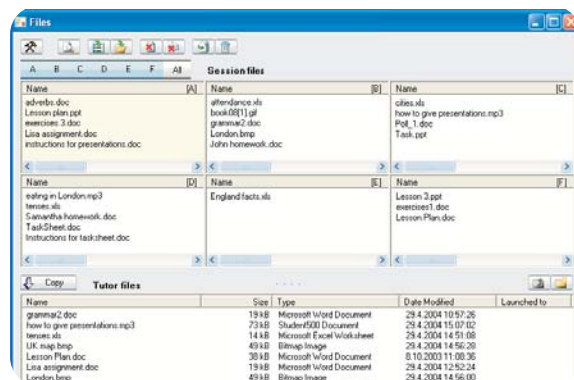


View of student interface in SANAKO Study 700 during a voice insert exercise.

e Teaching Software



View of teacher interface in SANAKO Study 700 showing U-shaped class layout.



View of session files area used for launching learning material for students in SANAKO Study 700.

Students may also use the text chat and audio communication features to request assistance from teachers.

Students benefit from:

- Voice recording
- Voice insert to create listen and repeat, question and answer and translation exercises
- Bookmarks
- Recap, repeat and drag and drop navigation
- Pair and group discussion
- Voting feature for live student feedback

Trouble-free Usage

All Study software and modules can be protected by our complete support package including:
SANAKO Software Maintenance
SANAKO Training Services
SANAKO Installation Services
SANAKO Helpdesk

SANAKO Study Modules

SANAKO Study solutions have complementary plug-in modules that introduce additional teaching and learning activities. Current modules include:

- SANAKO Study Examination Module
- SANAKO Study Video Live Module
- SANAKO Study Lite Recorder Module





SANAKO Study 700

MINIMUM REQUIREMENTS FOR THE TEACHER AND STUDENT PC

As per the requirements for either the Microsoft® Windows® XP or Vista operating system

- Microsoft® .NET Framework® 2.0 or greater
- DirectX 9.0c
- 2 GB recommended for Teacher PC
- 100 MB of free disk space for installation*
- 1024*768 display resolution with 16-bit colors
- AC97 or HDA compatible sound card
- Network Adapter, TCP/IP support required
- Quicktime 7.0.3 or later is required for displaying certain file types and for the SANAKO Study Video Live Module

*The amount of free disk space required during the use of Study 700 varies primarily according to the use of the recording functionality - longer recording times require more disk space.

NOTE! Actual requirements may vary based on the system configuration. It is essential to make sure that the operating system runs smoothly on each PC where a Study 700 Tutor or Student application will be installed.



SANAKO Educational Solutions

SANAKO educational solutions offer the best of modern technology to meet teachers' and students' needs in any learning environment, from live learning encounters, to independent or home study, and remote learning. Our wide range of solutions ensures that teachers can prepare for, manage and deliver motivating learning experiences anytime, anywhere.

SANAKO in Brief

SANAKO is an international software company producing educational technology. Sanako's award-winning solutions are used in more than 19,000 schools, higher educational institutions and corporations in over 100 countries worldwide. Headquarters are located in Turku, Finland with sales offices in major locations across the globe.

First-rate products and service are supported by a network of knowledgeable distributors operating in nearly 70 countries. SANAKO is a Microsoft® Certified Partner, a WorldDidac Quality Charter member and corporate member of the International Society for Technology in Education (ISTE®)

SANAKO Study software is validated to work with the Intel® Learning Series family of products.

SANAKO Corporation

P.O. Box 41, FI-20741 Turku, Finland
Phone +358 2 2166 500 • Fax +358 2 2166 527
info@sanako.com, <http://www.sanako.com>
SANAKO Virtual Educational Community:
<http://members.sanako.com>