



SANAKO Study 500



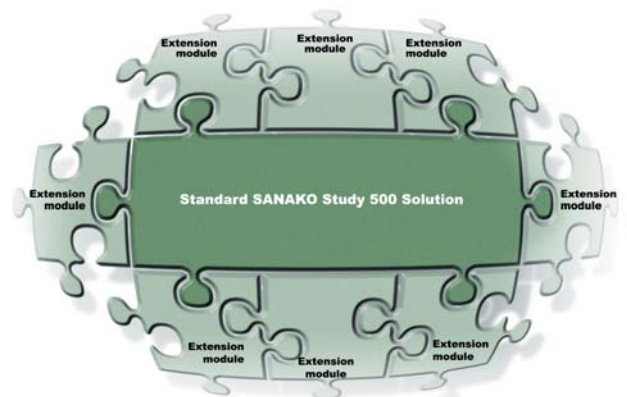
SANAKO Study 500

Performance Improving Teaching Software

SANAKO Study 500 is performance improving teaching software. It combines the use of multimedia and the Internet with a suite of essential classroom management tools. Teachers can use the versatile Study 500 software to deliver content-based classroom teaching in a variety of subject areas.

Students benefit from a suite of collaborative tools that encourage interaction, while they are guided, supported and mentored by teachers.

Study 500 is an outstanding solution, built to be compatible with current and future versions of Microsoft® .NET platform. Installation requires no special expertise and the software is easily integrated into existing ICT infrastructure, making it the ideal solution for IT-based whole school learning.



Prepare, Deliver, Manage



ADVANCED TECHNOLOGY, EASY FUNCTIONALITY

SANAKO Study 500 supports teacher-led classroom interaction for the effective teaching of any subject. Its classroom management capabilities ensure that teaching is efficient.

The easily recognizable color-coded sessions in the simple activity-based interface allow teachers to divide students into groups for different learning activities, supporting differentiated teaching for varying skill levels.

Communication and Collaboration Reinforce Learning

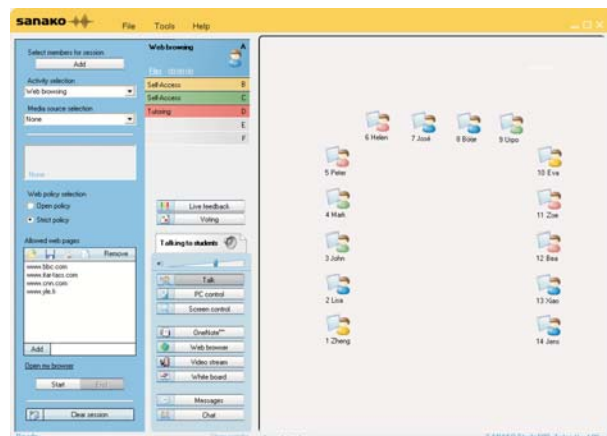
Study 500 offers different levels and methods of communication.

Voice and chat communication can be used to guide individual students through learning activities without class disruption.

Text communication allows teachers to interact and monitor students without disturbing the entire class.

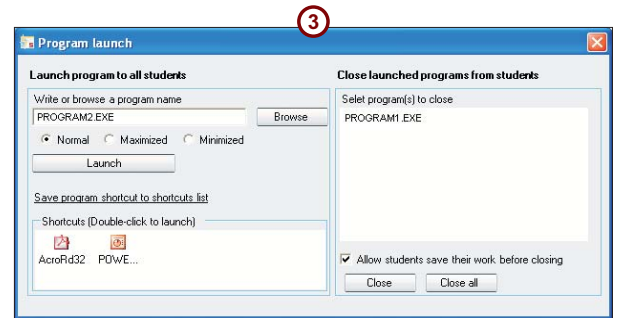
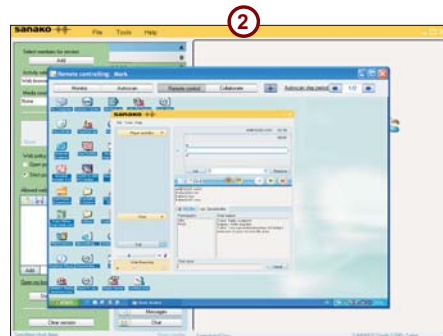
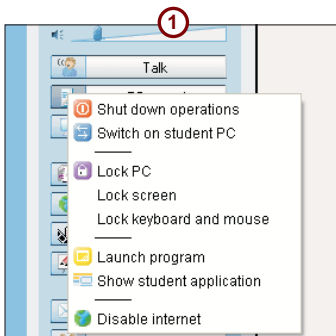
Integration of OneNote into Study 500 and provides more opportunities for teachers to provide effective and stimulating learning interactions.

Microsoft OneNote is a tool for note taking, information gathering, and multi-user collaboration. Used with SANAKO Study 500, the application allows teachers to easily distribute their classroom notes to students in the Study live learning session with a single mouse click. The Voting feature in Study 500 also allows students to give on-the-spot feedback on lessons in progress, allowing them more opportunities to influence the pace of teaching.



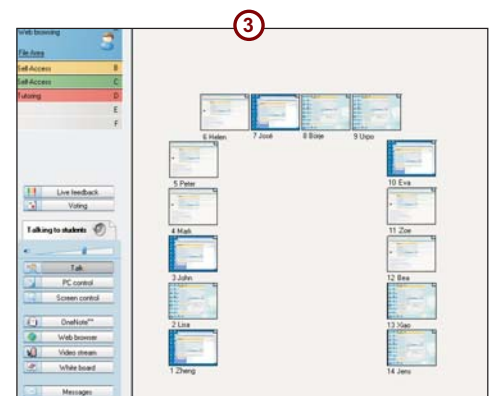
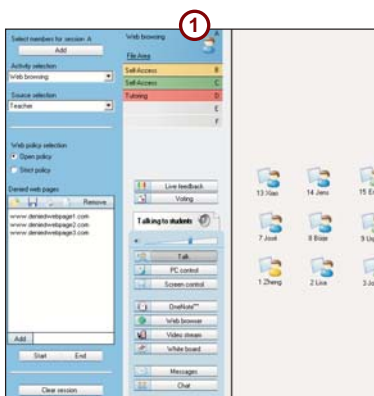
Teacher's main view in SANAKO Study 500.

Large ICT-based Teaching



CLASSROOM CONTROL FEATURES FOR EFFECTIVE TEACHING

- 1 Key remote control features give teachers the confidence to help students focus fully on assigned tasks. Teachers can even perform log off and shutdown routines on student computers. The "Wake-on-LAN" feature lets teachers remotely switch on student PCs, saving time setting up the class. The Internet blocking feature allows teachers to block access to the Internet. In addition to Internet blocking, teachers can create a list of other applications to be blocked, ensuring that students can focus on essential tasks.
- 2 Teachers can take command of students' screens and monitor their work.
- 3 Teachers can easily launch and close applications for students.



A CONTROLLED APPROACH TO WEB BROWSING

- 1 Teachers can initiate and control Web-based activities for the entire class or for a group of students.
- 2 The software makes it easy to take students along on a web tour, and define allowed and restricted web pages to prevent students from straying to unauthorized sites.
- 3 Scanning screens and student screen thumbnails ensure that students stay on track and on task.



SANAKO Study 500

Key Benefits in SANAKO Study 500

- Give class demonstrations by sending teacher screen to the students along with voice
- Observe how students work on tasks by discreetly monitoring their screen and audio
- Encourage students to collaborate on tasks by placing them into groups
- Use grouping feature to differentiate teaching in the same class
- Take students on a guided web tour without worrying about them straying to other sites

Modules and services available

Study 500 software can be enhanced with plug-in modules that introduce new teaching and learning activities. The software is also supported by a full range of after sales services.

SANAKO Study modules:

- SANAKO Study Video Live Module
- SANAKO Study Examination Module

SANAKO Educational Solutions

The Sanako family of educational products combines the best of technology with outstanding sound quality to answer teachers' needs in a variety of teaching environments, ranging from dedicated language teaching labs to language and cross-curricular teaching software, virtual and multimedia classrooms and classroom management tools. SANAKO Study 1200 is a modular and dynamic software language teaching solution for teacher-led and independent learning.

SANAKO in Brief

SANAKO is an international software company producing educational technology. Sanako's award-winning solutions are used in more than 19,000 schools, higher educational institutions and corporations in over 100 countries worldwide. Headquarters are located in Finland with sales offices in major locations across the globe.

First-rate products and service are supported by a network of knowledgeable distributors operating in nearly 70 countries. SANAKO is a Microsoft® Certified Partner, a WorldDidac Quality Charter member and corporate member of the International Society for Technology in Education (ISTE®).

SANAKO Study software is validated to work with the Intel® Learning Series family of products.



SANAKO Services include:

- SANAKO Installation Services
- SANAKO Training Services
- SANAKO Software Maintenance
- SANAKO Remote Support Services
- SANAKO Online Training Services

Network Requirements

Multicast transmission has to be enabled in the network.

NOTICE: WLAN has some limitations for multicasting, please contact SANAKO support for advice.

Minimum requirements for Teacher and Student PCs

As per the requirements for the Microsoft® Windows® XP, Windows Vista® or Windows 7 operating system

- Microsoft® .NET Framework® 2.0 SP1 or later
- DirectX 9.0c
- 2 GB recommended for Teacher PC
- 100 MB of free disk space for installation*
- 1024*768 display resolution with 16-bit colors
- AC97 or HDA compatible sound card
- Network Adapter, TCP/IP support required
- Quicktime 7.0.3 or later is required for displaying certain file types and for the SANAKO Study Video Live Module



NOTE! Actual requirements may vary based on the system configuration. It is essential to make sure that the operating system runs smoothly on each PC where a Study 500Tutor or Student application will be installed.

Microsoft, Windows, Windows Vista and the Windows Vista Start button are either registered trademarks or trademarks of Microsoft Corporation in the United States and/or other countries.

QuickTime is a registered trademark of Apple Computer Inc.

We reserve the right to make modifications to any program details described herein.

		<p>SANAKO Corporation P.O. Box 41, FI-20741 Turku, Finland Phone +358 2 2166 500 • Fax +358 2 2166 527 info@sanako.com, http://www.sanako.com SANAKO Virtual Educational Community: http://members.sanako.com</p>	1965111-9345
--	---	---	--------------